



YOUR CHOSEN FIT-OUT PARTNER - TRUSTED TO DELIVER

PORTFOLIO

Aretha, St Regis, The Palm



TABLE OF CONTENTS



1. Our Story



2. Core Capabilities.



3. Project Gallery



4. Active Projects.



5. Project Archive.



6. Contact Us.



OUR STORY

RK Gulf is a leading fit-out, interiors, and contracting company, headquartered in the United Arab Emirates, with full in-house joinery and manufacturing capabilities.

Founded in 2006 by Amit and Indu Patel, the company has built its reputation on precision delivery, technical excellence, and uncompromising attention to detail.

Now approaching two decades in the industry, RK Gulf has delivered a diverse portfolio of high-profile turnkey projects across hospitality, retail, commercial, cultural, and luxury lifestyle sectors. Recent landmark projects include: BAPS Hindu Mandir, Bâoli, Cove Beach, Falcone, Brass Monkey, Chom Chom, WTC Abu Dhabi Leisure and childrens entertainment centres, Jawaher Al Saadiyat and Al Zeina Padel Courts for ALDAR to name a few.



CORE CAPABILITIES

With a dedicated in-house team of over 110 skilled professionals, including joinery, MEP, and project delivery specialists, RK Gulf offers true end-to-end solutions, from concept support through to final handover. Every project is driven by collaboration, clear communication, and combining technical excellence with refined craftsmanship.

Our expertise span the full spectrum of project execution; Design // Civil, Construction & Fit-out // MEP // Joinery // Project Management // Turnkey Capabilities.

CORE CAPABILITIES

RK Gulf is a UAE-headquartered fit-out and contracting company delivering turnkey interior environments from concept through to completion. ISO 9001:2015 certified, the business is built on strong technical delivery, disciplined project execution, and a deeply hands-on approach on site.

9+

SECTORS OF EXPERTISE

100+

IN-HOUSE TEAM

750+

PROJECTS DELIVERED

2 MIL+

SQUARE FEET COVERED

20+

YEARS EXPERIENCE

PARTNERS



THE
DUBAI
MALL



EMAAR



البحيرات
THE LAKES



MERAAS



NAKHEEL



RAK
PROPERTIES





PROJECT GALLERY

HOSPITALITY

Aretha, St Regis, The Palm



Inspired by the legendary Aretha Franklin and the golden era of music, **Aretha**, is a sensational live music restaurant, bringing the essence of the sixties and seventies alive through soulful melodies and delectable cuisine.

From its rose gold bar to its central stage, every corner of Aretha exudes the charm and charisma of a bygone era.



Tanso, Jumeirah





TANSŌ, a modern Japanese restaurant located in the heart of Jumeirah, Dubai, is conceived as a refined, immersive environment rooted in the elemental quality of charcoal. Drawing from the Japanese word for “charcoal,” the design narrative is expressed through a rich material palette of natural stone, charred textures and crafted timber, creating a space that feels both grounded and elevated. Designed by Samar Zakhem Design, the interior balances warmth with precision, using sculptural lighting inspired by the movement of fire to bring rhythm and softness to the space. At its core, a live cooking area and intimate 10-seat chef’s table introduce a sense of theatre, positioning the restaurant as a considered, atmospheric dining destination.

Falcone, Al Barsha



FALCONE is an all-day pizzeria Napoletana inspired by the vibrant spirit of Napoli. Designed as a warm, welcoming space, it brings together the energy of Italy with a relaxed, contemporary setting for dining from day to night.



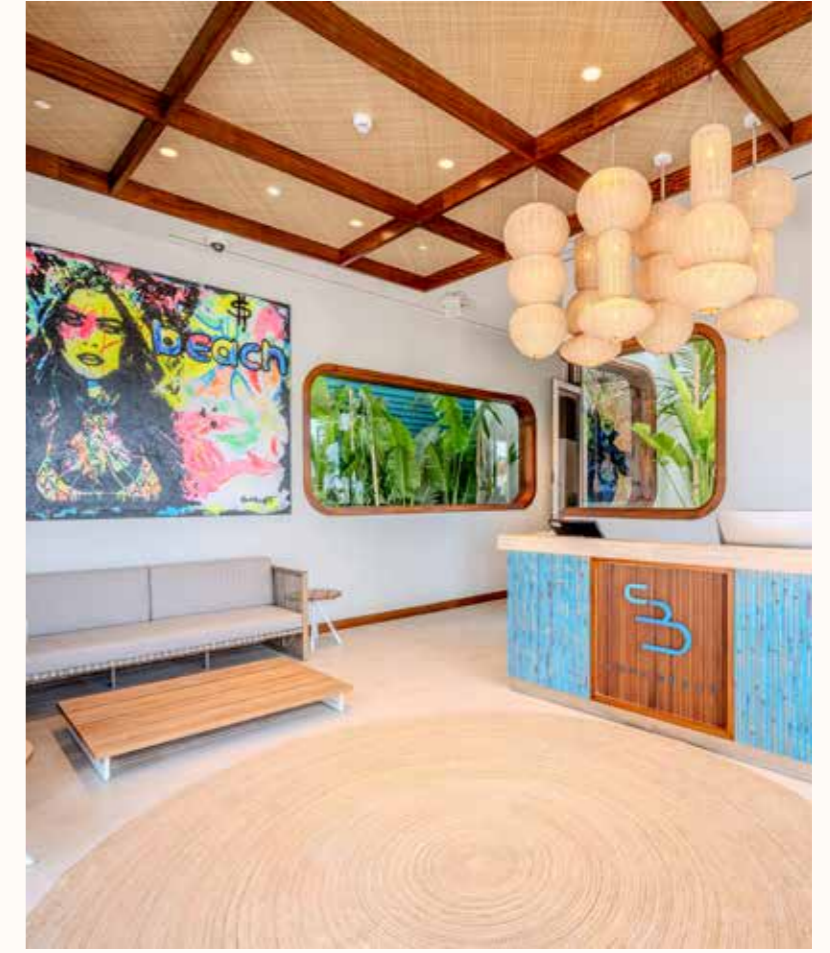


Cove Beach, JBR



COVEBEACH is a luxury party beach club in the UAE, known for its modern design and laid-back beach setting. Located on the shores of the Arabian Sea, it offers an easy escape from the city. The space includes private cabanas, feature pools, and a Rosé Lounge with views across to Ain Dubai.

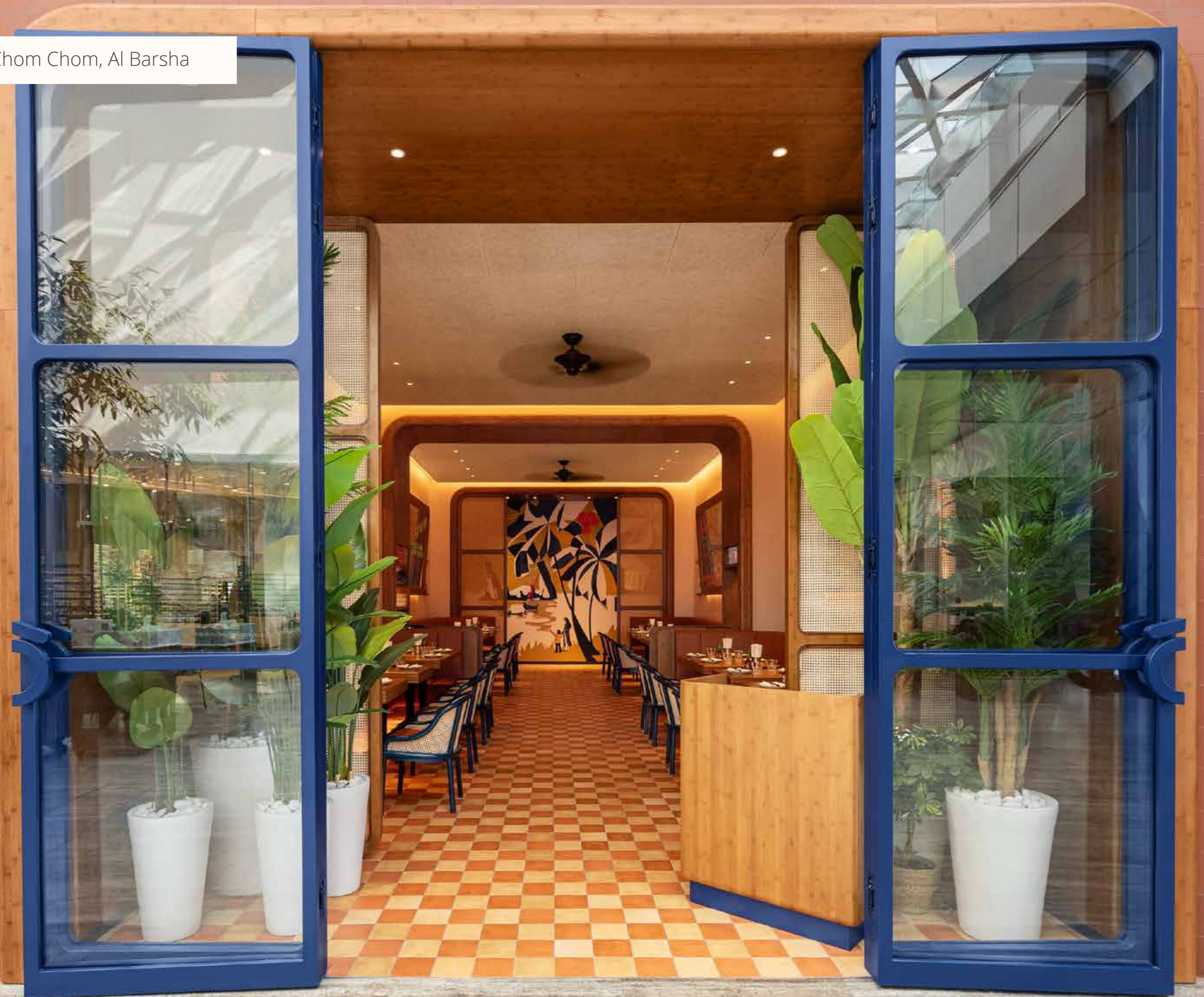
Sierra, curated by **COVEBEACH** brings Mediterranean inspired dining to the venue, while the beach deck is designed for relaxed drinks by the water. With regular DJ-led events and live performances, the venue combines daytime lounging with a lively party atmosphere.





Chom Chom, Al Barsha

CHÔM
CHÔM



Chôm Chôm is an all-day Vietnamese eatery inspired by the lively rhythm of Vietnam's street cafés and urban culture. The interiors are colourful, relaxed and full of energy, featuring patterned tiles, vintage-style posters and warm lighting that shifts from bright and lively during the day to cosy at night. Tables and chairs are set close together, creating an intimate, welcoming atmosphere that feels informal, social and authentic.

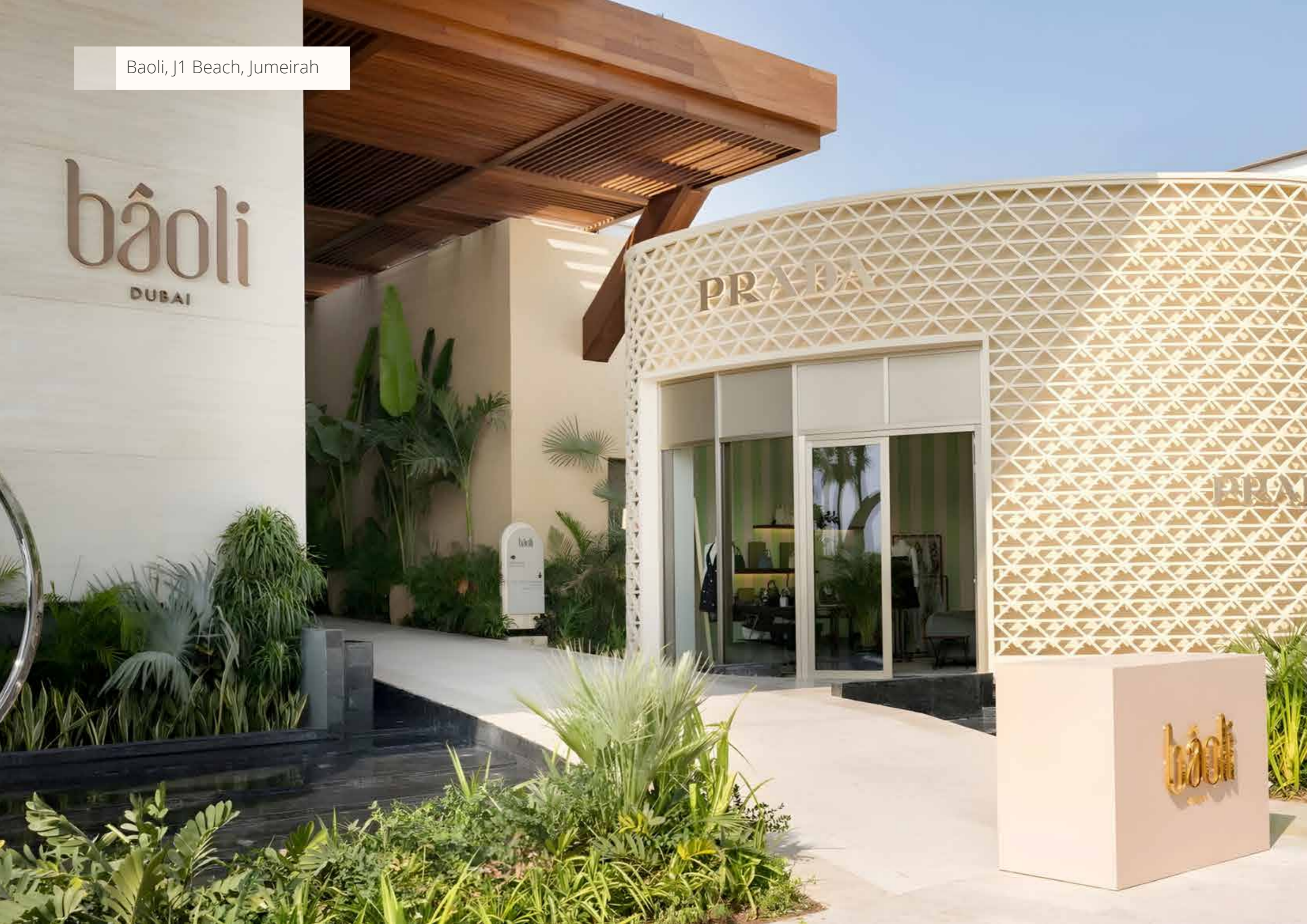


Baoli, J1 Beach, Jumeirah

baoli
DUBAI

PRIVATE

baoli
DUBAI



For **Baoli** Dubai, our role as fit-out contractor focused on bringing a richly detailed, high-end hospitality concept to life.

The project brought together premium materials, bespoke finishes and carefully curated detailing, requiring a high level of craftsmanship and close coordination with Downtown Ventures, Compass Project Consulting and Sunset Hospitality.

Beyond the restaurant itself, our scope also included the delivery of the Prada boutique, ensuring a seamless level of quality and execution across every part of the guest experience.

Working as one team, every element was delivered with precision to create a sophisticated environment that reflects Baoli's elevated positioning and has quickly established itself as one of Dubai's most sought-after dining destinations.





Boga Superfoods, JBR

 **BOGA**
super foods

 **بوقا**
سوبر فودس



BOGA Superfoods is a modern, clean-eating destination focused on made from scratch sandwiches, salads, soups, and juices. Every dish is free from additives, with greens grown in-house and purified water used throughout.

Rooted in simplicity and sustainability, BOGA champions natural nourishment through honest ingredients, thoughtful sourcing, and a calm, contemporary setting designed to make healthy living feel effortless.



Chez Wham, The Palm

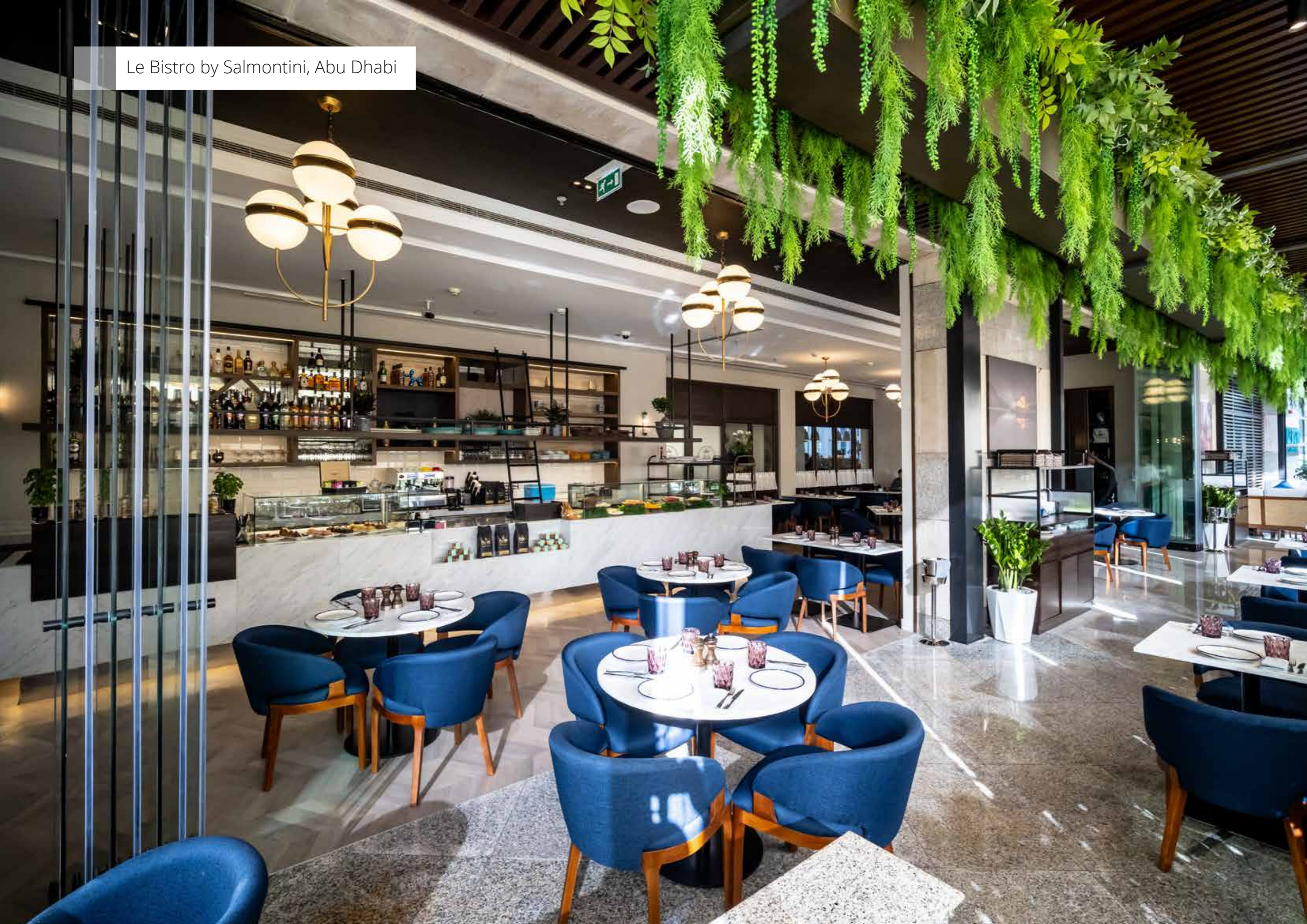


Chez Wam is a social destination shaped by music, energy, and a strong sense of belonging. Inspired by the French phrase “Chez Moi” meaning “at mine” the space is designed to feel welcoming, familiar, and effortlessly personal.

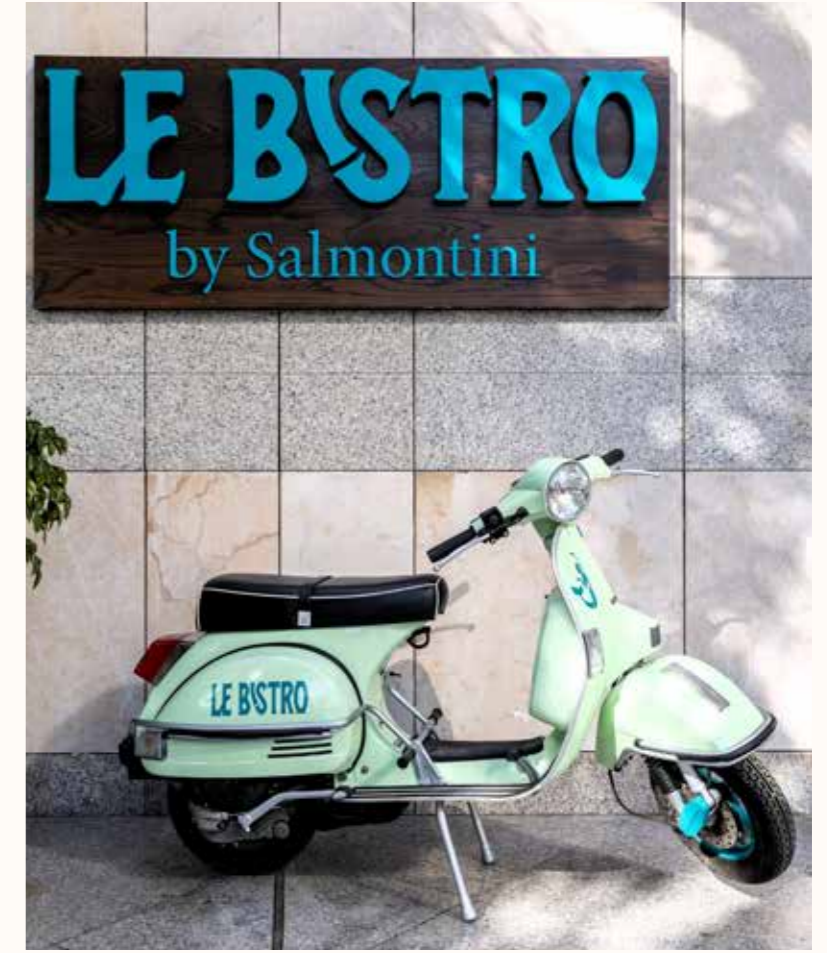
Created by Chef Hadrien, **Chez Wam** captures the rhythm of shared moments: layered textures, warm lighting, clinking glasses, and curated soundscapes. It’s an environment built for connection where people gather, and feel at home.



Le Bistro by Salmontini, Abu Dhabi



Spanning 2,000 sq ft, **Le Bistro by Salmontini** was delivered from a bare shell into a refined dining space, marking a key chapter in the brand's expansion and a new addition to Abu Dhabi's evolving culinary landscape.

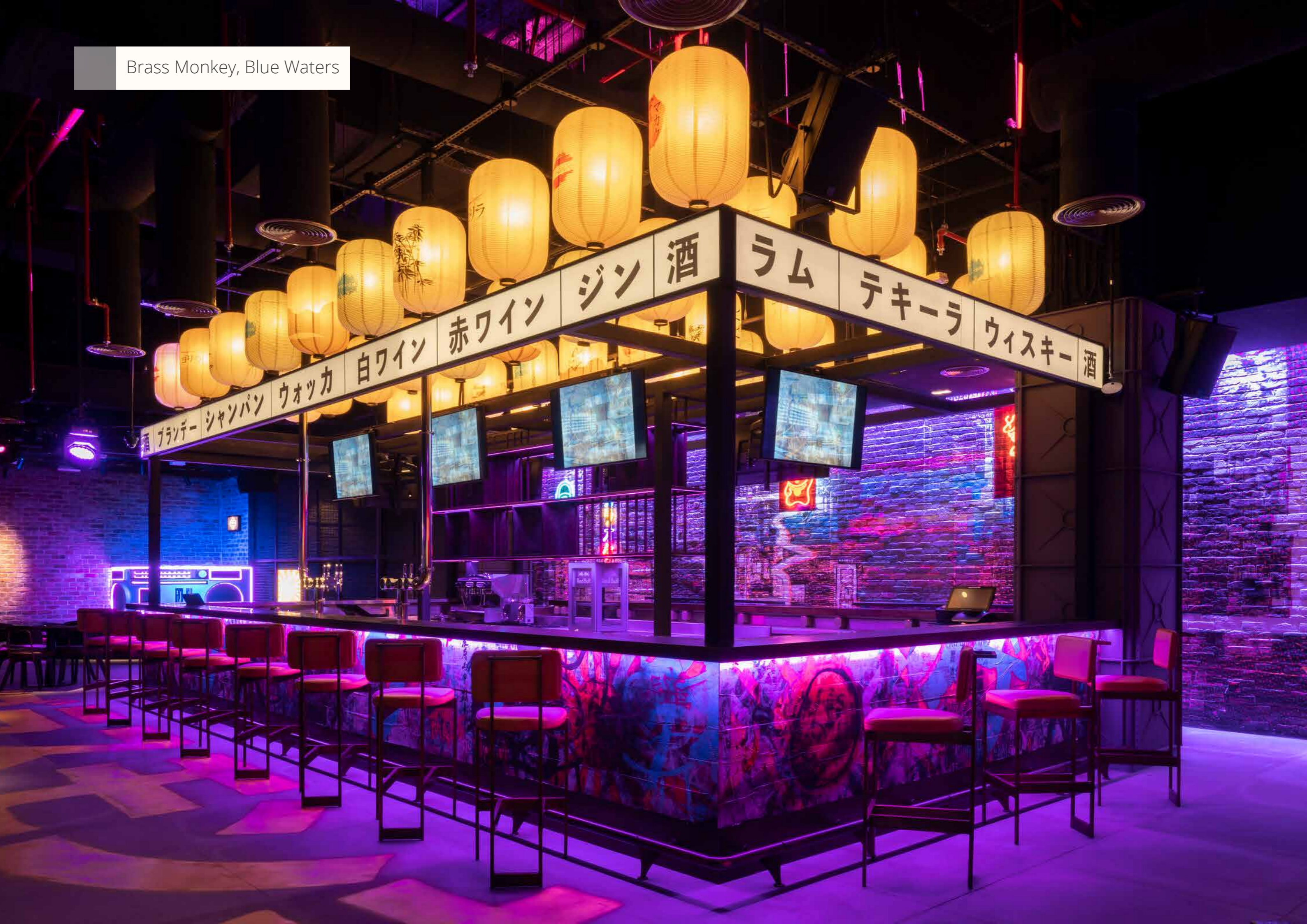




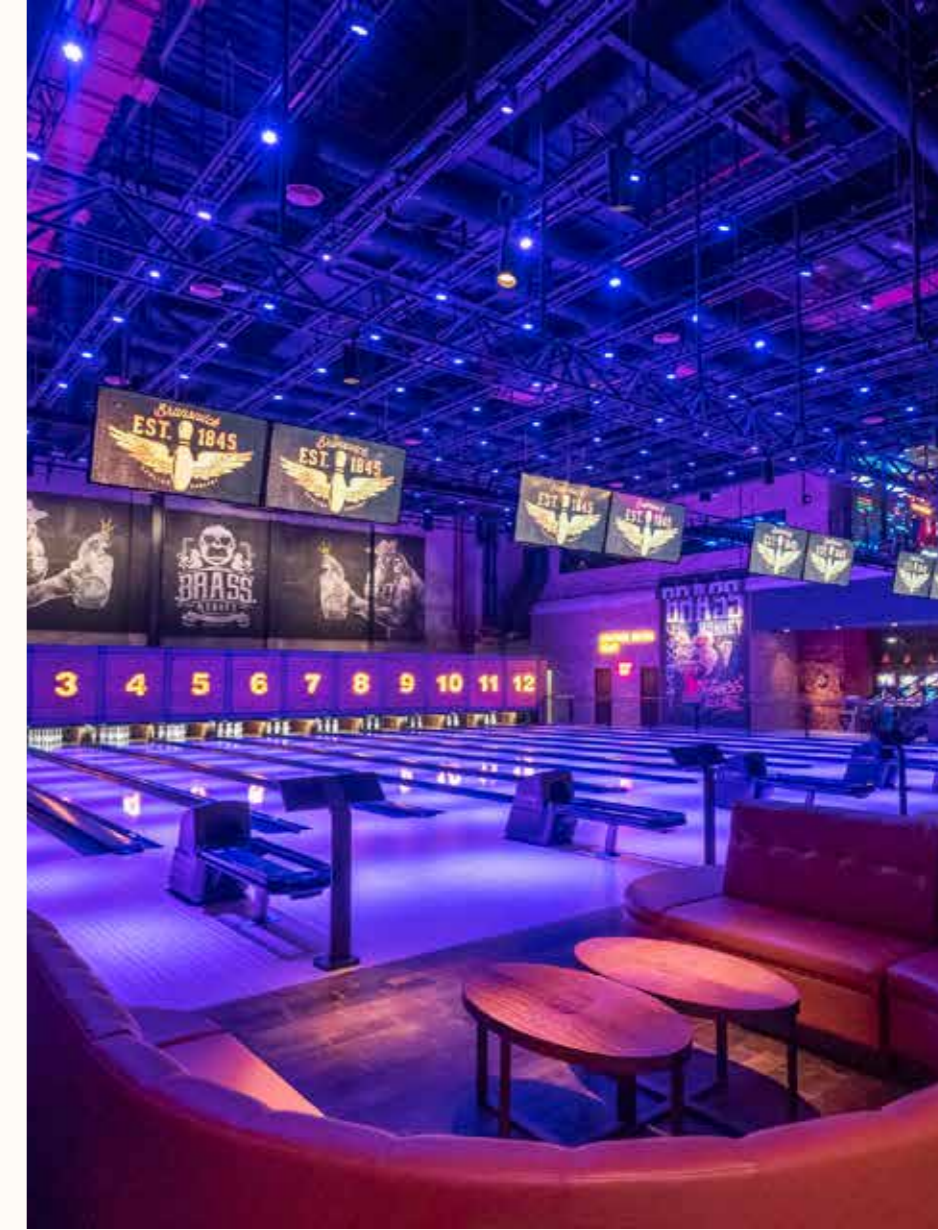
PROJECT GALLERY

SPORTS & LEISURE

Brass Monkey, Blue Waters



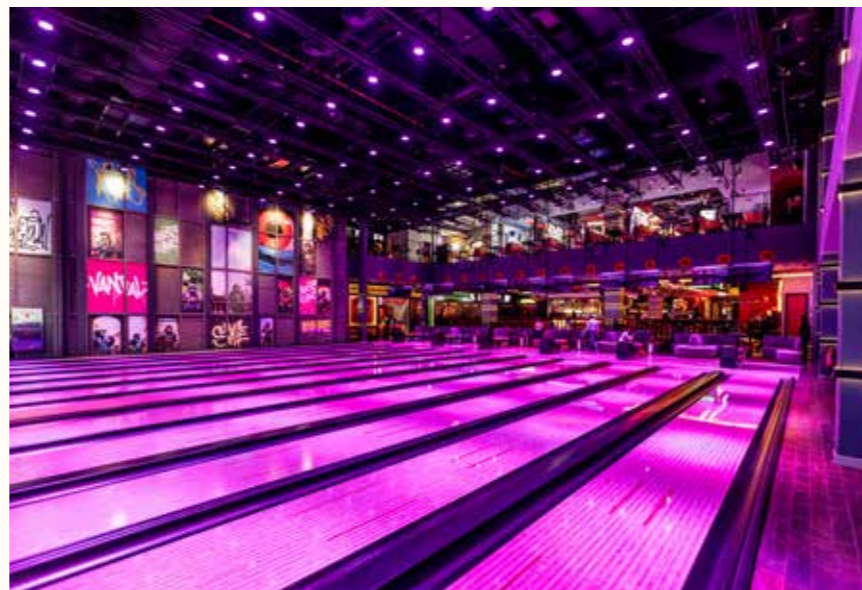
Brass Monkey, founded in 2020, is a vibrant playground where nostalgia meets nightlife. The space pulses with retro-inspired neon, immersive lighting, and playful textures, creating an atmosphere that sparks energy and fun. Showcasing local artists and curated visual touches, it's a hub for connection, from arcade games and pool tables to bowling alleys. Brass Monkey is designed to feel alive, playful, and endlessly youthful a destination to let go, mingle, and grow young again.

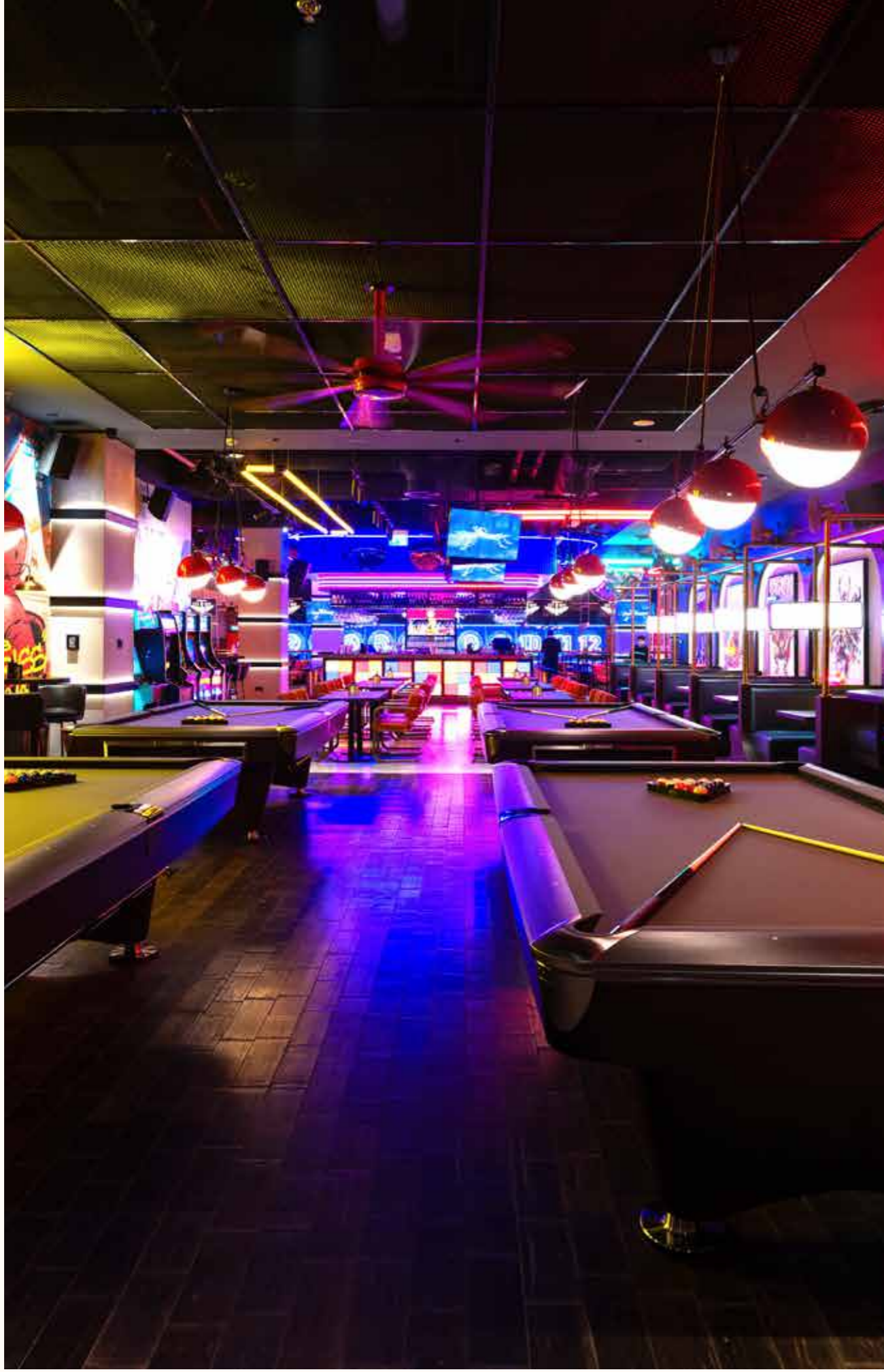


Brass Monkey, City Walk

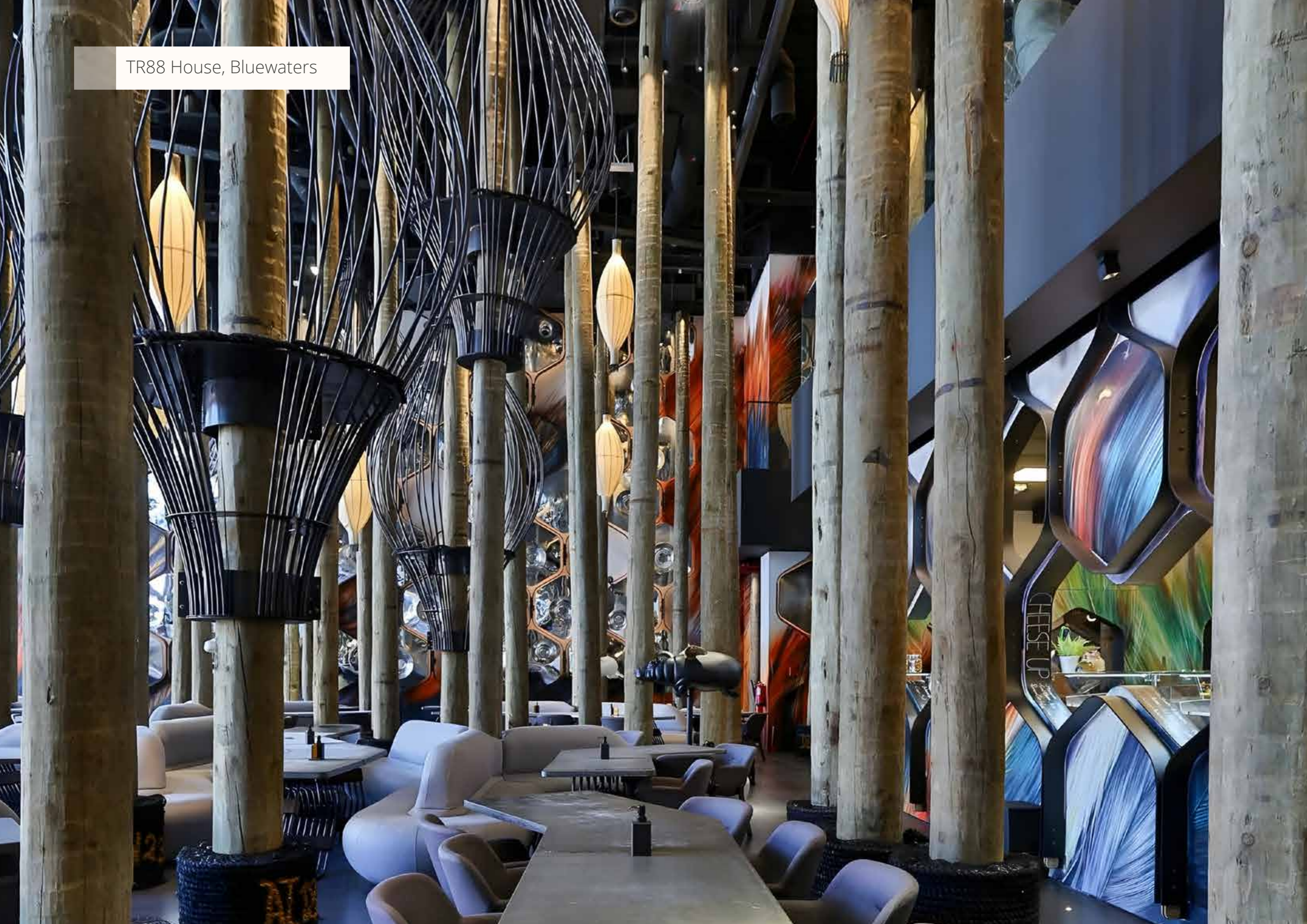


Brass Monkey City Walk is Brass Monkey's second UAE location, reimagining the brand with a fresh design and energy. Drawing on 90s nostalgia, the space is alive with hip-hop, R&B, and soul vibes, bold neon, layered textures, and playful interactive zones. From arcade games and bowling lanes to curated art and music-filled corners, **Brass Monkey** City Walk is a vibrant social playground where design, energy, and connection meet.





TR88 House, Bluewaters

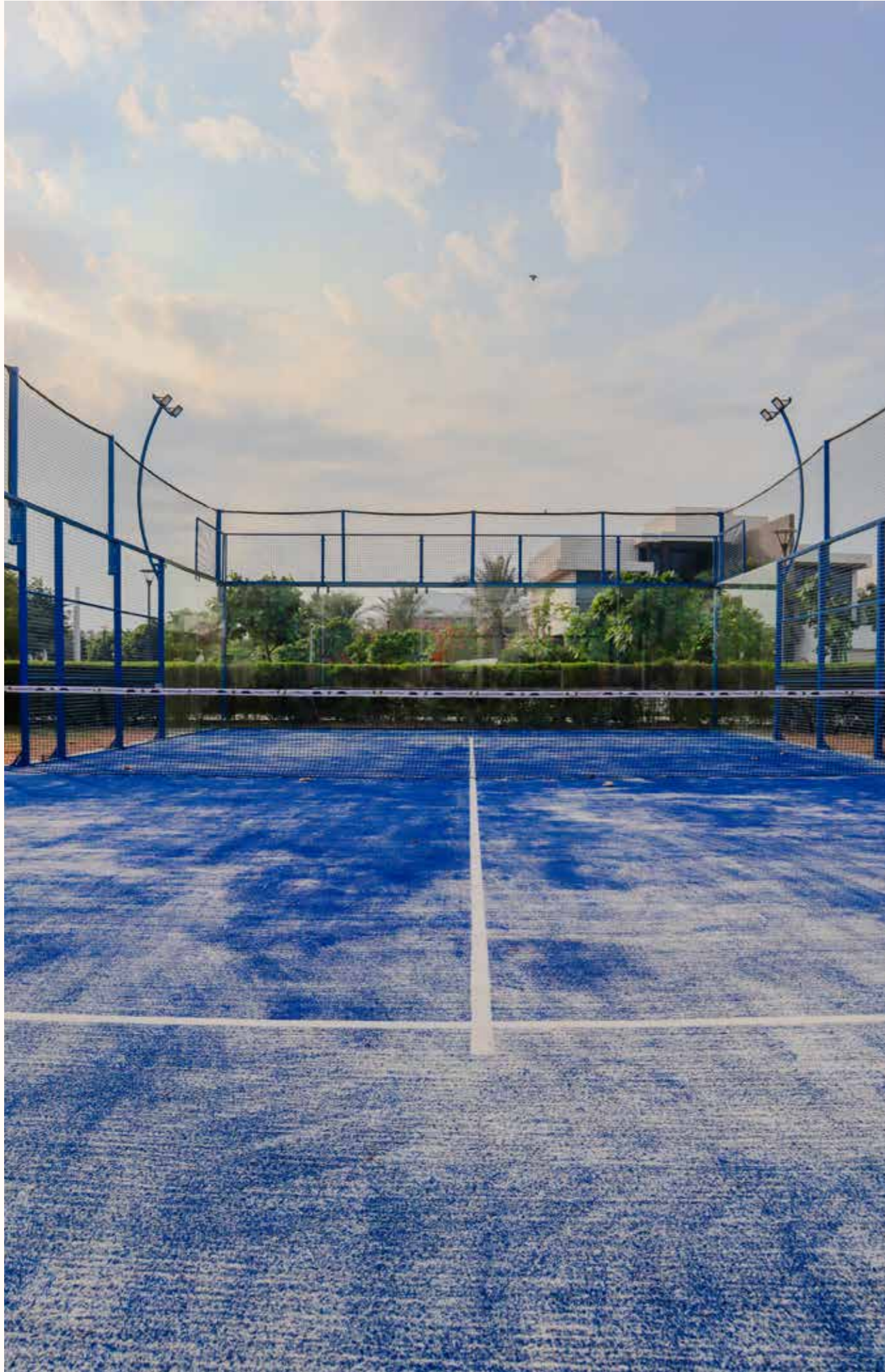


Tr88 House is a family entertainment venue, designed as a series of clearly defined zones connected through a central circulation spine. The fit-out includes a trampoline park, soft-play areas, laser tag, and glow-in-the-dark mini golf, each with its own character while remaining visually connected. A centrally located food hall anchors the space, bringing together six casual dining concepts and creating a natural social hub. The interior design prioritises clarity, flow, and durability across a high-traffic, multi-use environment.



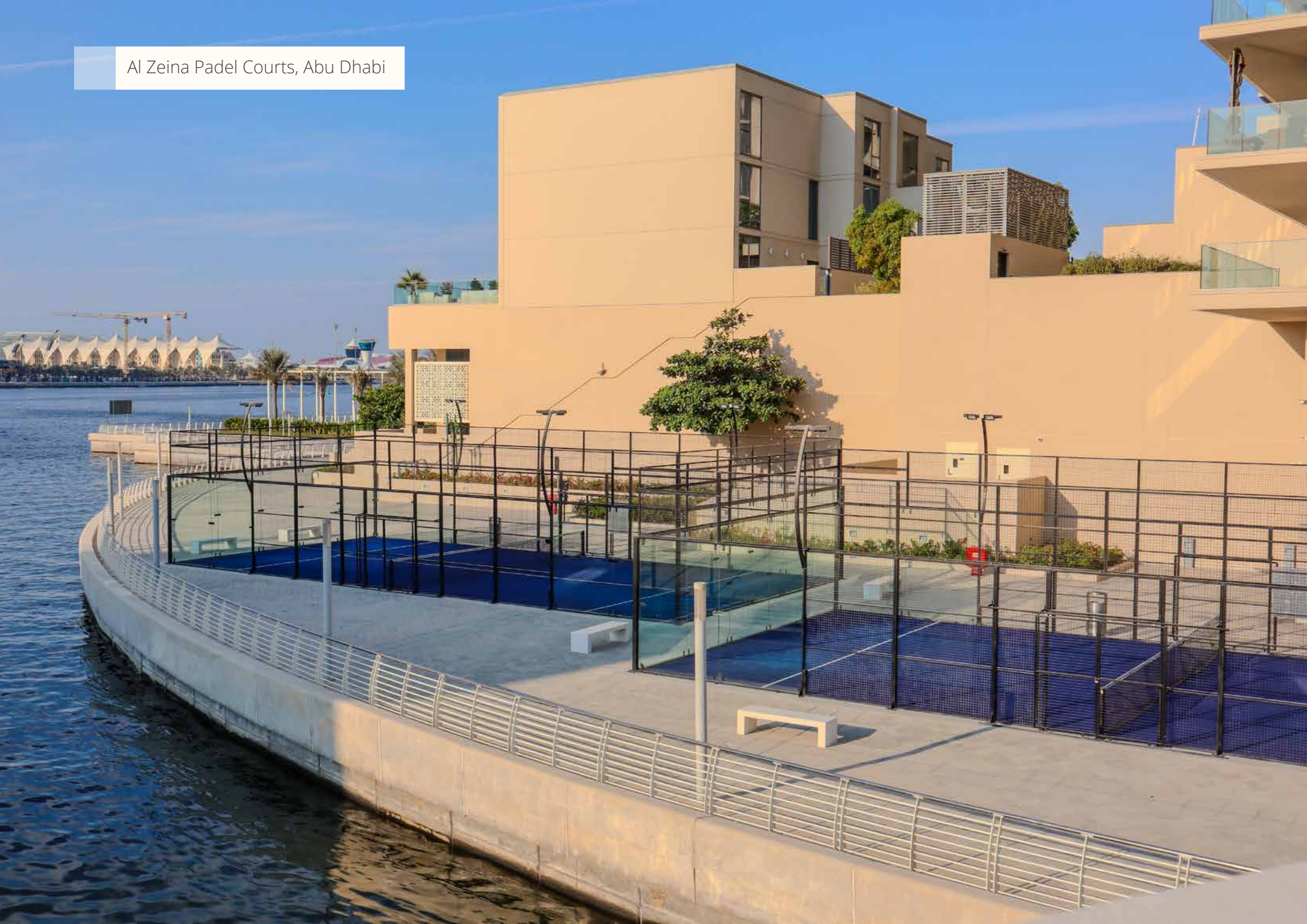
Saadiyat Padel Courts, Abu Dhabi





Saadiyat Padel Courts, Abu Dhabi is a contemporary padel destination designed for a high-level playing experience. The courts features durable systems, refined detailing, and a clean, modern aesthetic that aligns with Abu Dhabi's active lifestyle.

Al Zeina Padel Courts, Abu Dhabi



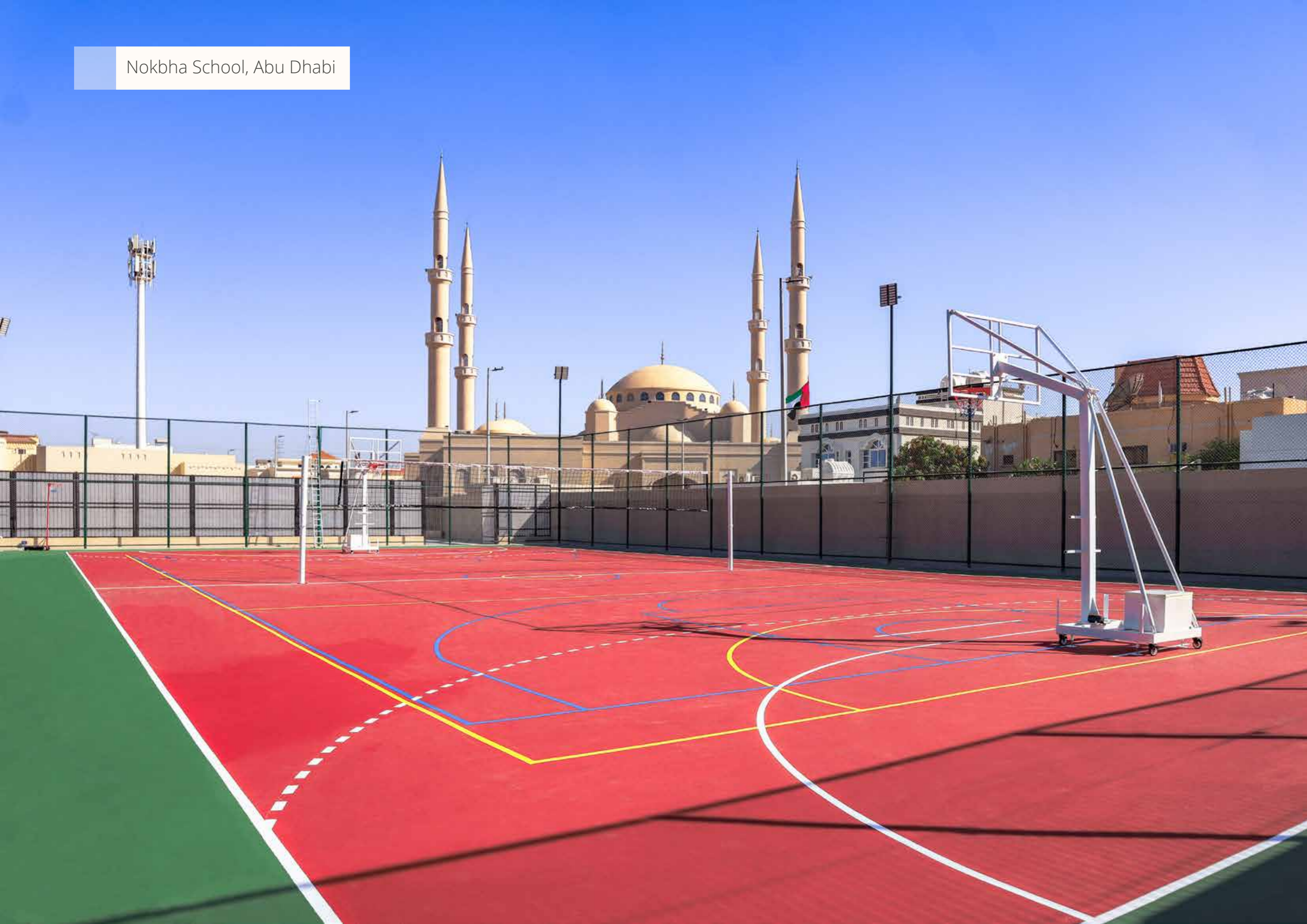


Located within Al Zeina Waterfront, an underused space has been transformed into a natural part of community life. The **Al Zeina Padel Courts** now serve as a social meeting point encouraging movement, connection, and shared moments by the water.

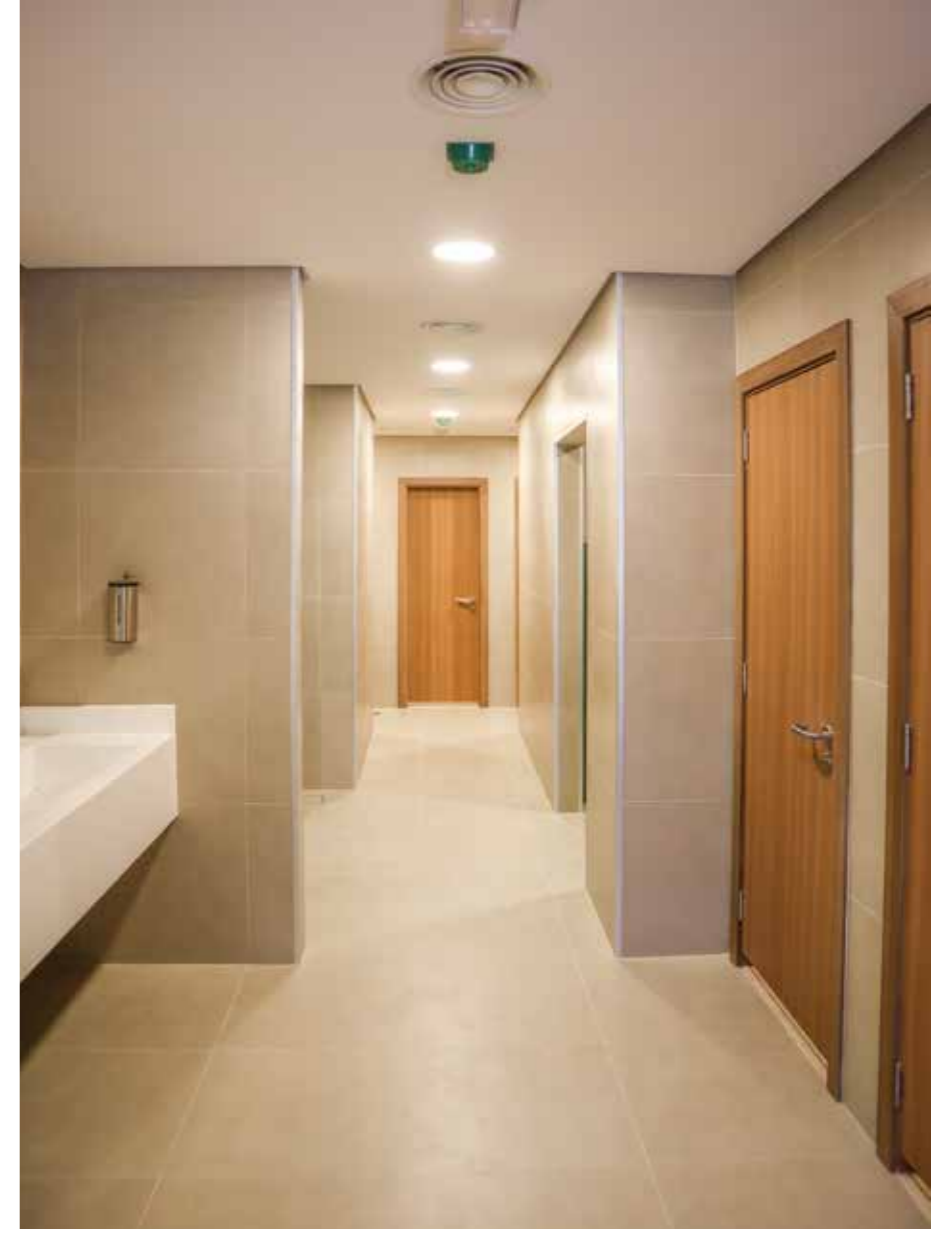
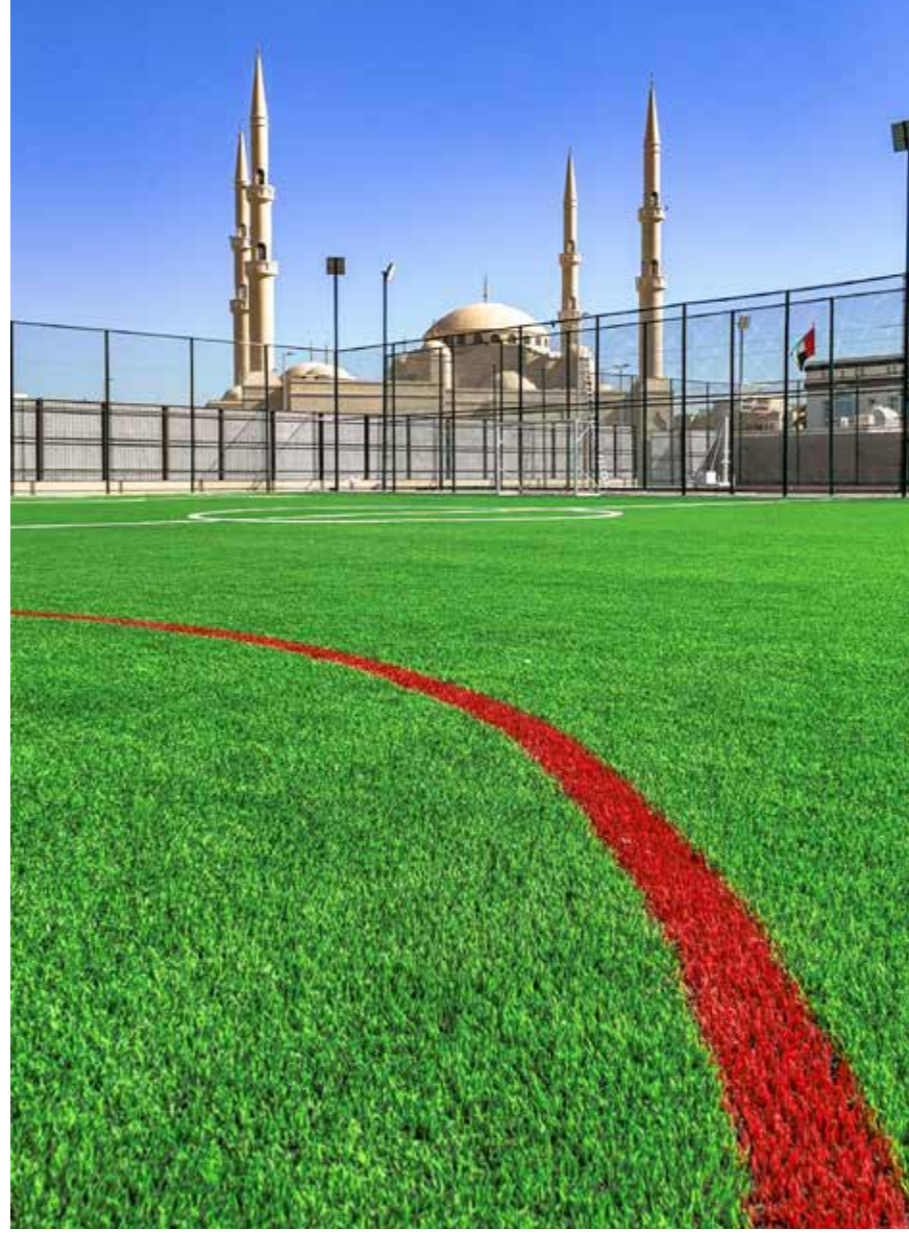
As the appointed contractor, the project was delivered from groundwork to final execution, with a focus on integrating the courts seamlessly into the surrounding environment.

SPACES BUILT FOR
PERFORMANCE

Nokbha School, Abu Dhabi

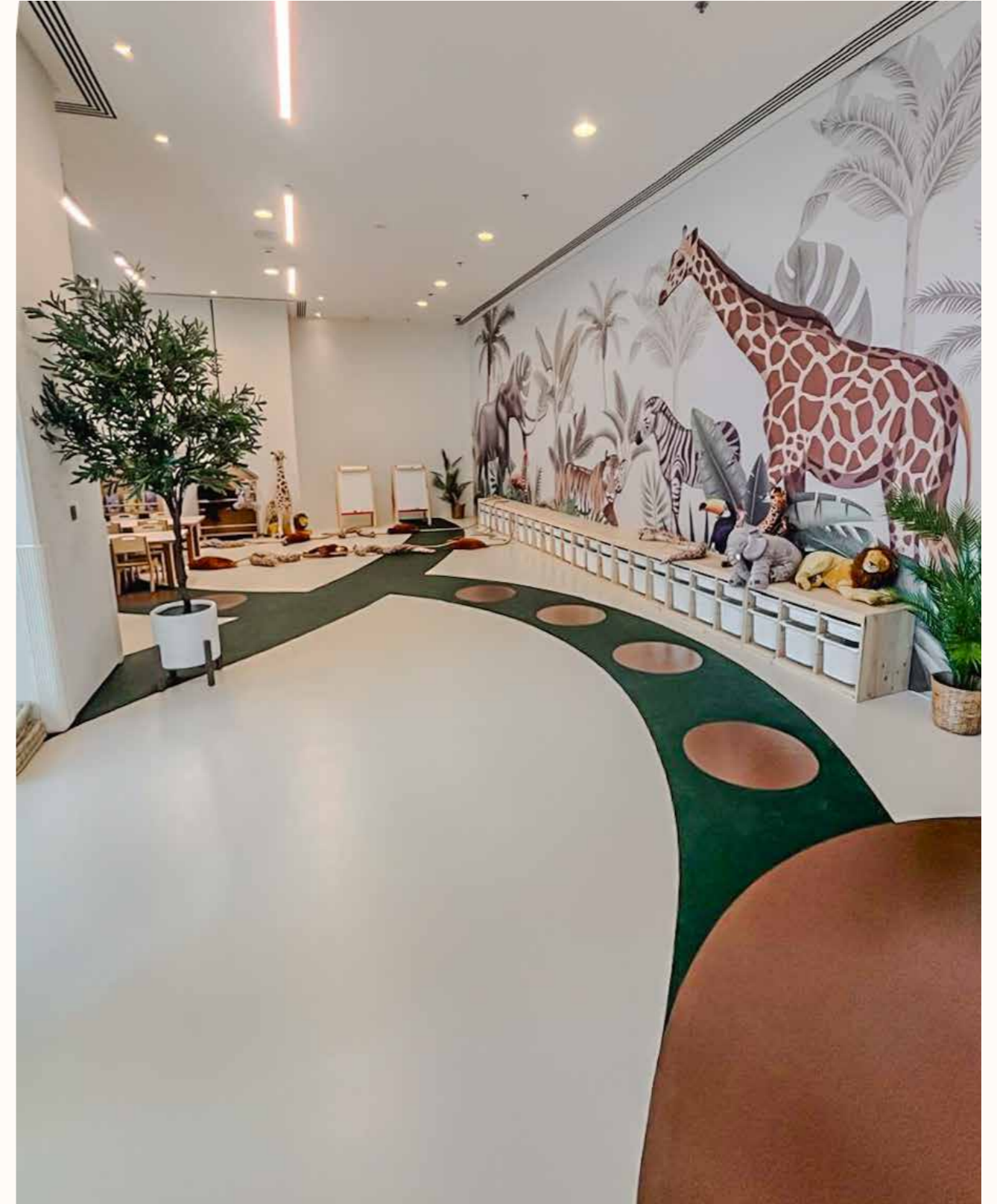
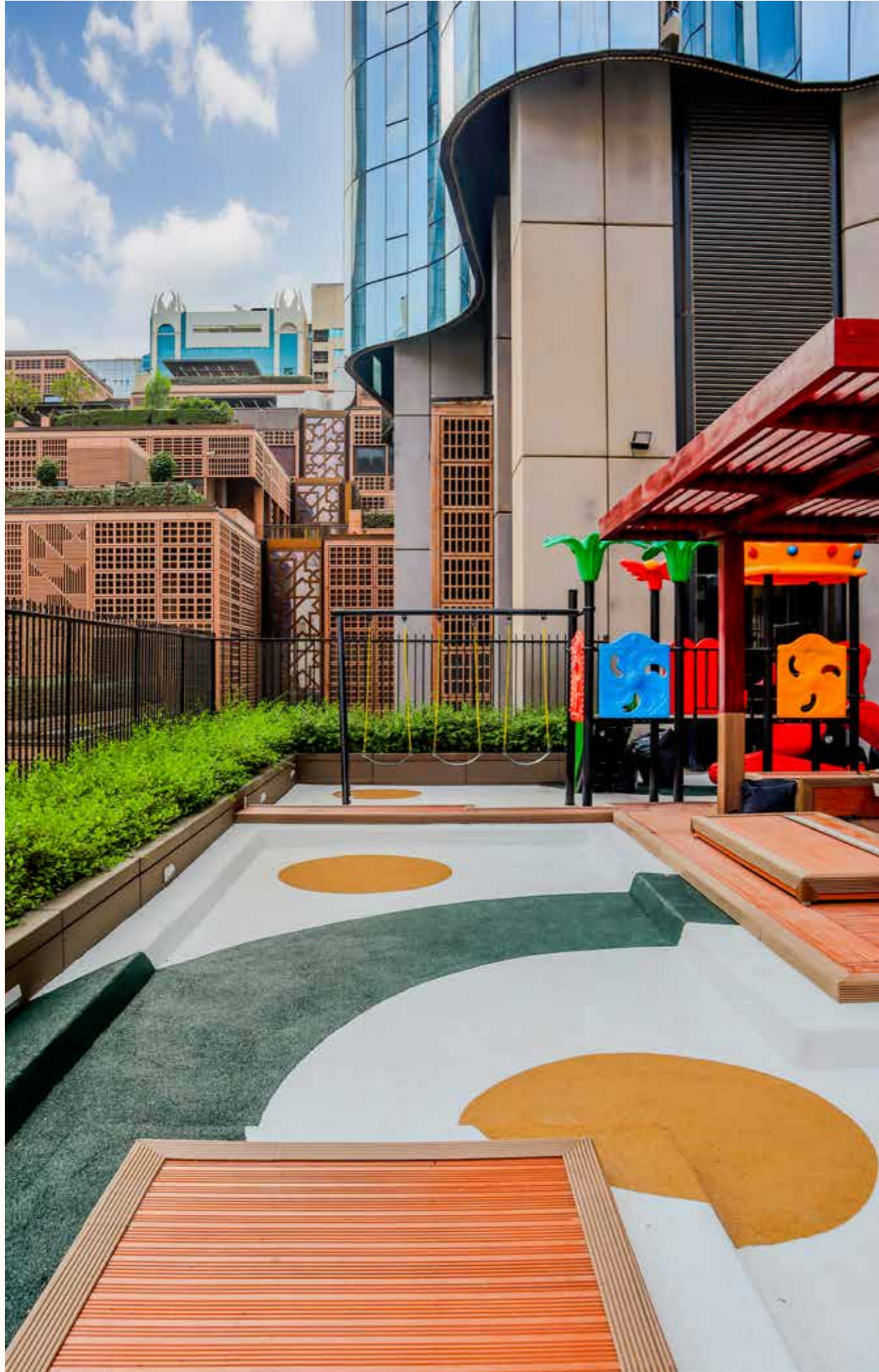


RK Gulf supported the delivery of the outdoor sports facilities at **Nokhba School** in Abu Dhabi, creating durable and functional spaces that encourage activity, recreation, and student wellbeing.



WTC Kids Area, Abu Dhabi





At World Trade Centre Abu Dhabi, we delivered a children's indoor-outdoor play area. The indoor space is designed as a playful, safari-inspired environment, while the overall area encourages imagination and movement through considered design, creating an engaging setting for play and exploration.



PROJECT GALLERY

SPA & WELLNESS

Samadhi, Jumeirah



Samadhi Wellness, located in the heart of Jumeirah, Dubai, has been designed as a serene haven for mind and body. The space fosters connection and flow, bringing like-minded people together in a calm, immersive environment. Features include an infrared-heated studio pool, sauna, and cold bath, all integrated seamlessly into the wellness-focused design.





Posture, Downtown Dubai

POSTURE.





Posture, Downtown Dubai, has been designed as a Balearic-inspired studio that combines light, texture, and proportion to create a calm, restorative environment.

Drawing on a palette of natural materials, soft tones, and refined detailing, the space evokes a sense of effortless simplicity and wellbeing. Clean lines and carefully considered spatial planning foster balance, focus, and connection, creating an atmosphere that encourages both movement and mindful presence. Offering a welcoming retreat from the pace of the city, where design and experience work together to support a holistic sense of wellbeing.

INTIMATE SPACES
**LASTING
IMPRESSIONS**

Bedashing



Bedashing is an award-winning contemporary beauty salon defined by refined spatial planning and a modern, elevated aesthetic. With 24 lounges across the UAE, each interior is designed to prioritise comfort, privacy, and flow, creating a consistent and premium environment that enhances the client experience.



Tips and Toes



Tips & Toes is a beauty and wellness space which draws inspiration from the restorative spirit of Bali. Layered materials, soft lighting, and organic forms work together to create a sense of escape, transforming everyday beauty rituals into moments of relaxation. The space captures the brand's emphasis on wellbeing, offering guests a peaceful setting that feels both uplifting and restorative





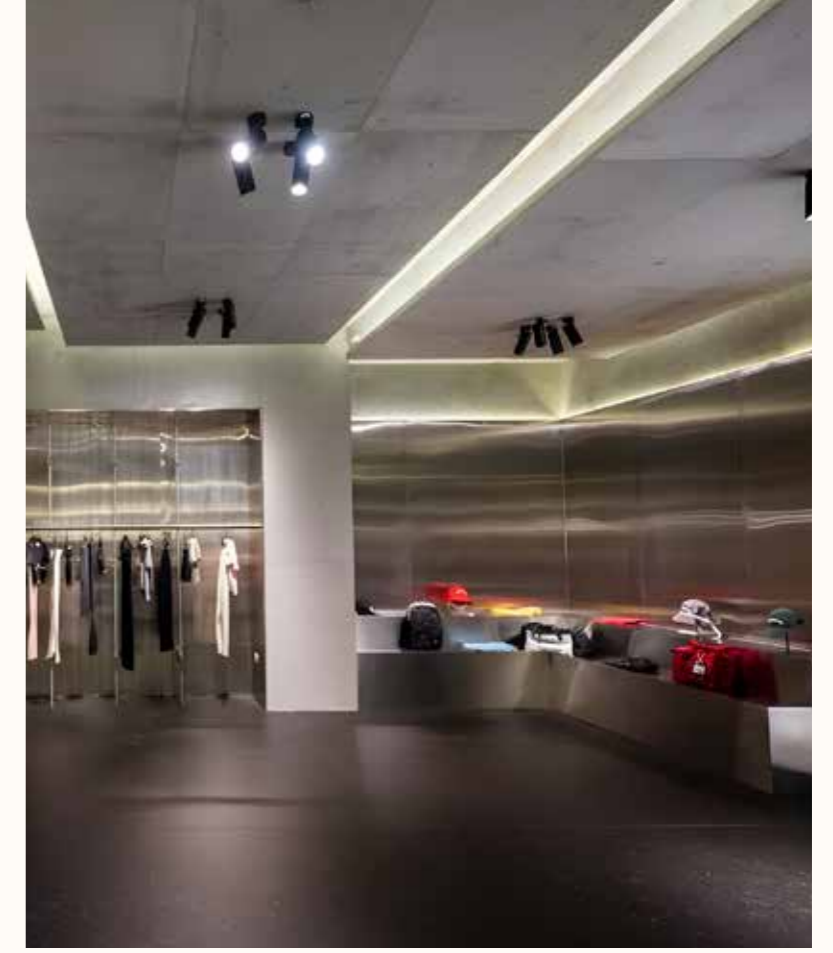
PROJECT GALLERY

RETAIL

1886, Red Sea Mall, Jeddah



1886, Red Sea Mall, Jeddah is a distinctive retail space designed to create an engaging and memorable customer experience. The project features high-quality finishes, bespoke joinery, and carefully executed detailing throughout, resulting in a refined environment that reflects the brand's identity. Delivered with a strong focus on craftsmanship and precision, the fit-out demonstrates a seamless balance between design vision and construction excellence.



1886, Riyadh



1886 Riyadh is a contemporary fashion retail space designed to reflect the brand's modern, urban identity. The fit-out balances clean architectural lines with subtle material contrasts, creating a calm yet confident environment for retail. Thoughtful lighting, muted tones, and considered detailing place the focus on the garments, resulting in a space that feels composed, minimal, and quietly expressive.

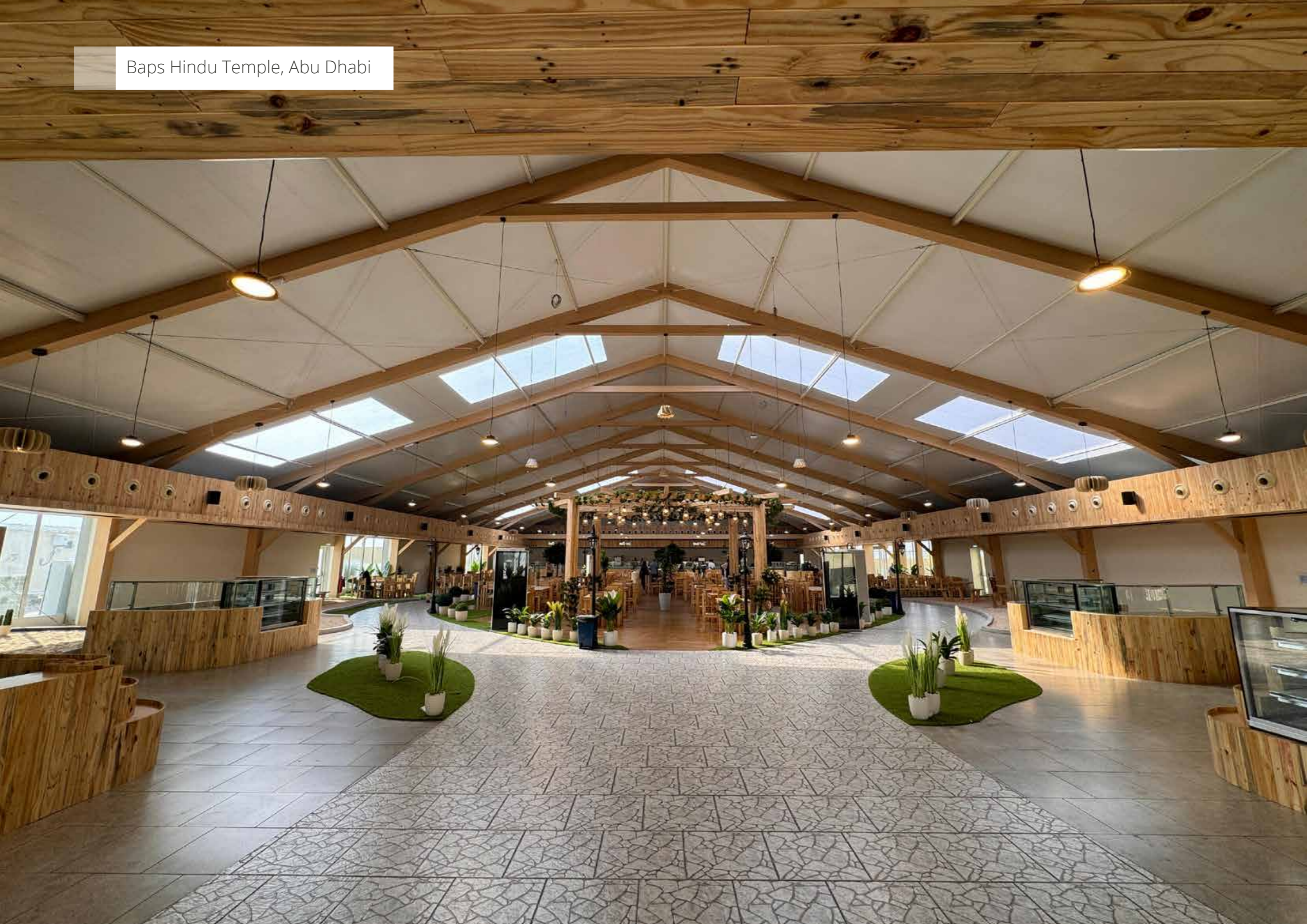




PROJECT GALLERY

CULTURAL

Baps Hindu Temple, Abu Dhabi



A landmark project for Abu Dhabi, the **BAPS Hindu Mandir** is the region's first traditional Hindu stone temple and a significant cultural and architectural destination.

RK Gulf delivered the fit-out of the Abhishek Mandapam, auditorium, ancillary buildings, and key interior spaces, with a strong focus on detailed and bespoke woodwork throughout.





Developed in close coordination with Shri Brahmvihari Swamiji and Shri Akshartit Swamiji, the food court was designed and constructed with sustainability as a core principle, incorporating recycled and locally sourced materials such as repurposed pallets, date palm leaves, and reeds.

The project contributes to a permanent UAE landmark, bringing together traditional craftsmanship, considered materiality, and contemporary construction practices.



PROJECT GALLERY

COMMERCIAL

ECAP Investments, City walk

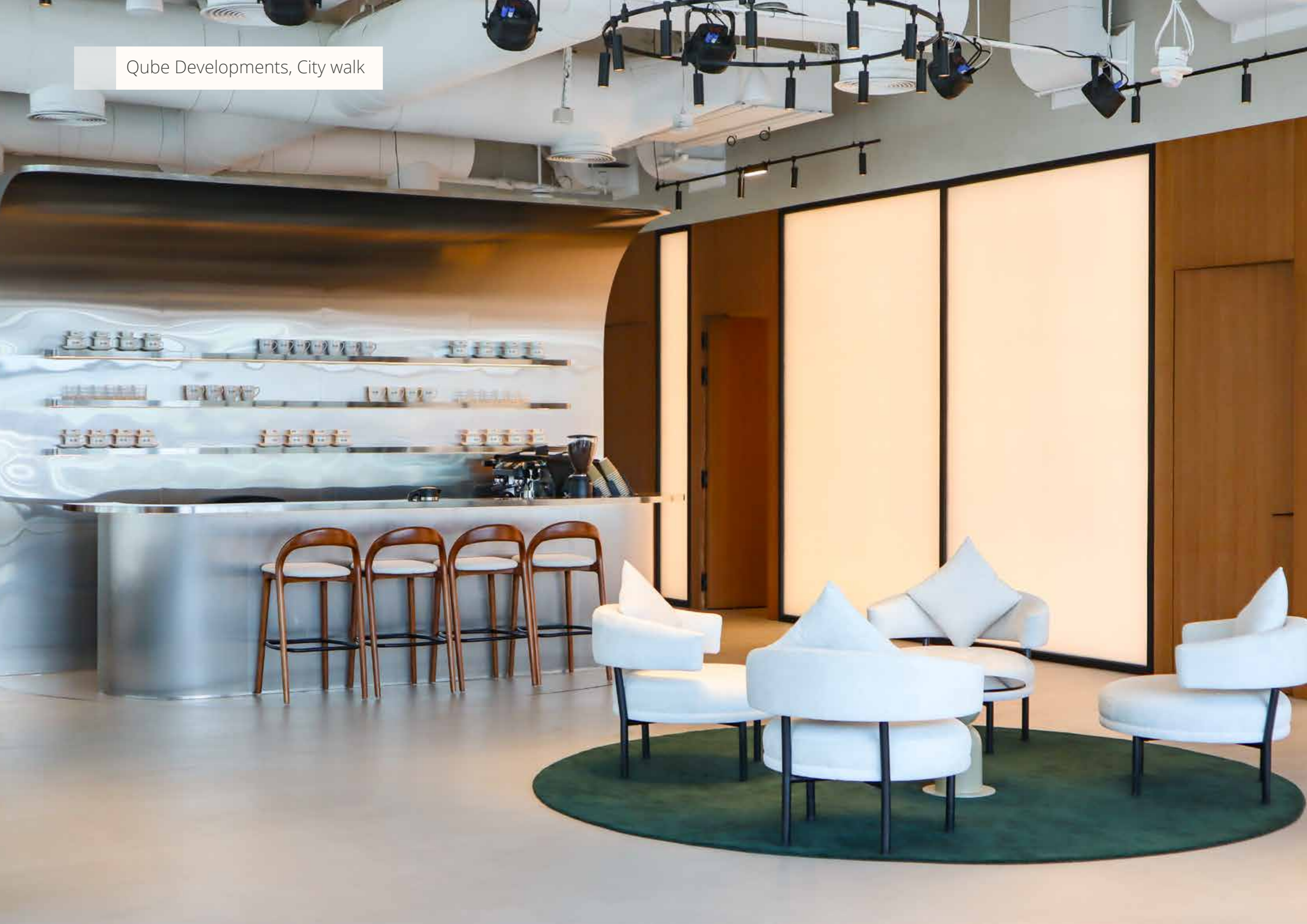


ECAP Investments' new headquarters redefines the traditional corporate workspace, prioritising considered design and experiential quality.

The fit-out delivers a refined, high-spec environment that reflects both the prestige of its location and the calibre of service offered, with premium materials, crafted detailing, and hospitality-level finishes integrated throughout.



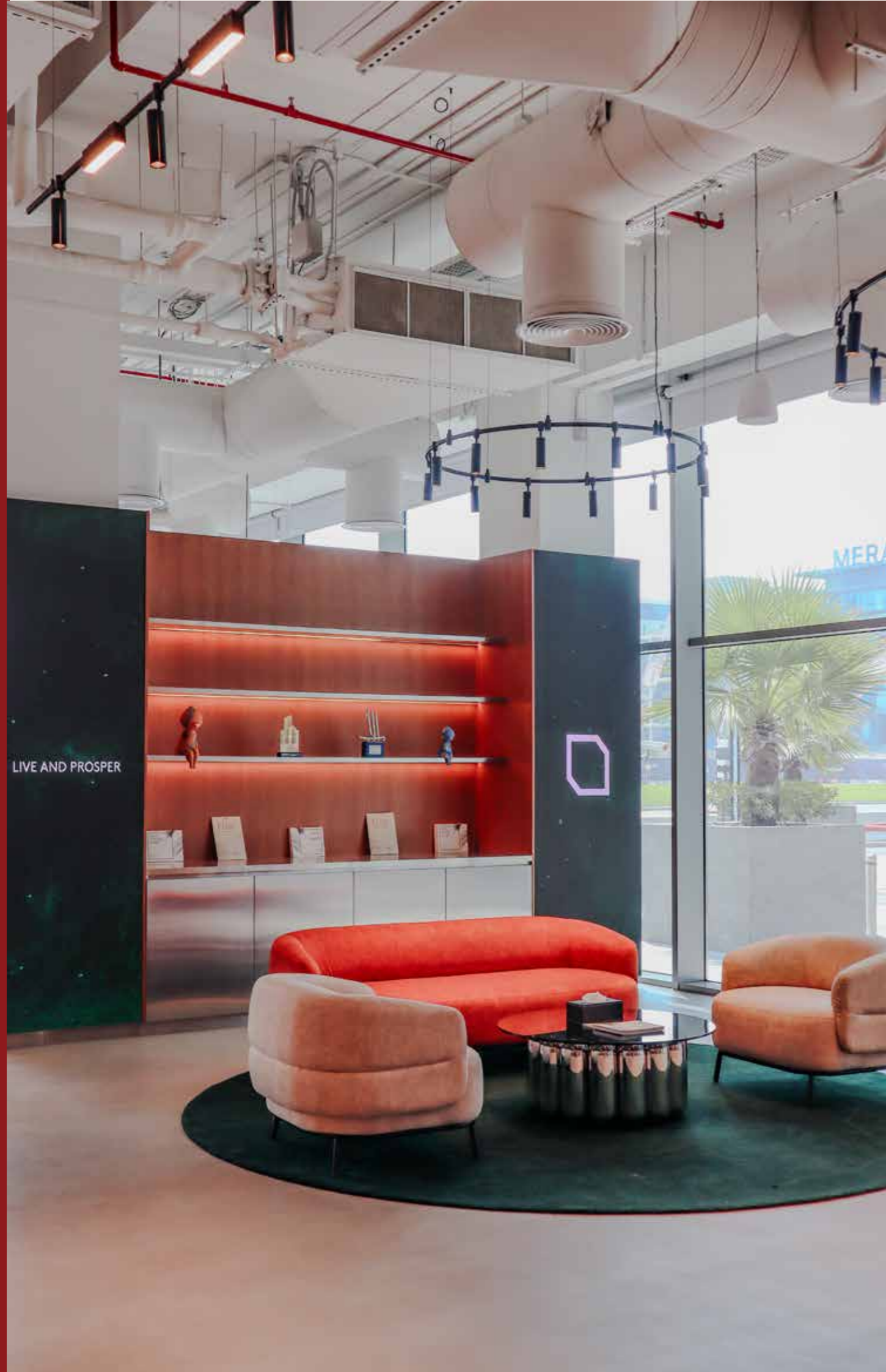
Qube Developments, City walk



The fit-out of **Qube Development's** headquarters at Al Satwa incorporates a series of considered design interventions to support a flexible, contemporary workplace.

A key feature is a fully rotatable, multi-functional unit that transitions between a discreet television screen for meetings and presentations, and a coffee counter serving staff and visitors. This integrated element maximises space efficiency while introducing an unexpected layer of functionality, reinforcing a workplace environment that balances practicality with refined design.





SARA, Sheikh Zayed Road



WATER BAR

PERFECTTASTE

DESIGNER STATION

Founded in 1967, **SARA** Group is a leading Middle East distributor of luxury bathroom products, supplying premium sanitary ware to residential and commercial projects across the region. The showroom interiors are designed to clearly showcase a curated selection of international brands, with a focus on material quality, spatial clarity, and product-led displays that support both design exploration and client decision-making.



ACTIVE PROJECTS

DIFFERENT SECTORS, SAME STANDARDS.

RK Gulf's ongoing projects span retail flagships, neighbourhood restaurants and entertainment-led destinations showcasing our expertise in high-spec fit-outs and thoughtfully designed interiors. From dynamic commercial spaces to luxury wellness, sports and leisure environments, each project demonstrates a commitment to material quality and understanding, spatial efficiency and innovative design solutions that elevate the user experience.

These exciting ventures include:

Brass Monkey, Motor City

Hey Tiger, Motor City

Brau, DIFC

Real Madrid Store, Dubai Mall

Nail Salon, Eastern Mangroves, Abu Dhabi

Nail Salon, Zeina, Abu Dhabi

SOCO, Mall of the Emirates

Activate, Mall of the Emirates



PROJECT ARCHIVE

Our project archive is testament to the vast variety of projects and sectors we have had the honour to work on during our 20 year service. We've learnt how different spaces behave once they are live, how people move through them, what takes wear and tear and where pressures tend to arise. Each one pushed us to think differently and continues to influence how we build today.

Here is a snapshot of the incredible spaces we've been fortunate enough to work on.



Jean Georges, Four Seasons



Private Villa, Dubai Hills



Champions League Store

Fine Dining & Beach Clubs

- Baoli Beach Club, La Mer Dubai
- Cove Beach
- Aretha, St Regis Dubai
- Doors Premium Restaurant
- Jean Georges Restaurant, Four Seasons Resort
- Reign (7 Elephants), Emirates Financial Tower

Spa & Wellness

- Samadhi Yoga Studio, Dubai
- Shiseido Spa, City walk
- Studio 14, Dubai
- Nulus Juice Bar, Abu Dhabi
- Healthy Bowls, Abu Dhabi
- Tips and Toes, Nation Tower
- Tips and Toes, Marina Mall
- Tips and Toes, Silicon Central
- Tips and Toes, Ruwais
- Bedashing, Dhafra
- Tips and Toes, Reem Mall
- Hair of Istanbul, City Walk
- Posture, Emaar Boulevard

Sports & Performance

- Energy Plus, Abu Dhabi
- Energy Plus, Al Ain
- Volt Fitness, Abu Dhabi
- Sweat Studio, Abu Dhabi
- Al Zeina Padel Courts, Abu Dhabi
- Jawaher Al Saadiyat Padel Courts, Abu Dhabi

Leisure

- Tr88house, 88 Terrace Rooftop, Bluewaters
- Brass Monkey, Bluewaters
- Brass Monkey, City Walk

Restaurants & Cafes

- Asil Rixos JBR
- Jamies Italian, Jumeirah Beach Hotel
- Hitchki, Mirdiff City Centre
- Hitchki, Grand Millenium
- Le Bistro by Salmontini, Abu Dhabi
- Le Bistro by Salmontini, DIFC
- Island Chippys, Bluewaters
- London Dairy, Jumeirah Lake Towers
- Zor, The Pointe
- Zroom, The Pointe
- Reem Al Bawadi, RAK
- Reem Al Bawadi, Dalma Mall
- Reem Al Bawadi, Al Ain
- Uefa Champions League Café
- Kentucky Fried Chicken (KFC)
- Boga, City Walk
- Boga, Bay Avenue
- Boga, JBR
- Fratelli La Buffala
- TGI Friday
- Sugoi
- Baskin Robbins
- Zadena
- Snog Frozen Yoghurts
- Zen Express
- Charleys Subs
- Indian Curry
- Dairy Queen
- Quiznos
- Hola
- La Bottega Del Gelato
- Starbucks Coffee
- Bawabat Restaurant
- Crepe Café
- Thai Express
- Nandos
- Chillies
- McDonalds
- Advocado, DIFC

Restaurants & Cafes

- Sushi Art
- Crab Market
- Brandi Pizzeria
- Gourmet Burger Kitchen
- Morellis Ice Cream
- Magic Wok
- Illy Cafe
- Papa John's Pizza
- Mexika Restaurant
- Capuccino
- Mayta
- Leopolds Of London
- Pinkberry
- Patisserie Valerie
- Mashawi
- Aran Cafe
- Zayt Zaytoun
- Thai Express
- Liwan Café
- Kebabs and Kurries
- Shamiana
- Krispy Kreme Doughnuts
- Hot Wok
- Love Mishy
- Real Madrid Café, Dubai
- Simply Italian
- Nulus, Abu Dhabi
- Cold Stone Creamery
- Pressmans
- Yo Sushi
- The Great Kebab Factory
- Camilles Café
- Falcone
- Chom Chom
- Taste of Italy, Galleria Mall
- Harpers Bazaar, City Walk and D3
- Vicolo, Design District

Lifestyle Retail

- Interiors Showroom, Abu Dhabi
- Jones The Grocer
- Marina Home Interiors
- Swarovski*
- Faces
- L'Occitane
- Damas Les Exclusives
- Early Learning Centre
- Gold Gourmet
- Home Centre
- Homes R Us
- Ippolita Jewellery
- Toys 'R' Us
- Neal's Yard Remedies
- Woojooh
- Samsung
- Dialma Brown
- Sconto
- The Nest
- Bois & Chiffons
- Souvenir, The Zoo
- Vision Express
- Novus Art Gallery
- Daiso
- Roseberry Supermarket
- Wheatfields, Al Forsan village
- Wheatfields, Al AIN
- Islamic Art Centre, Al Seef
- Miraj, Sheikh Zayed Mosque
- Molton Brown
- Mothercare
- Sara Showroom, Abu Dhabi
- Tumi
- Presto
- Flamant

Fashion Retail

- Diesel
- Catimini
- Khaadi
- Cadenza
- Morgan
- Soiree
- Nayomi
- Mikyajy
- Fashions For Less
- Coccinelle
- Womens Contemporary
- Giordano
- Scoops The Walls
- Pat McGrath Labs
- Mademoiselle
- Altinyildiz
- Artikel
- Collezione
- Fabrikaa
- Flormar
- Mexx Wobo
- Mexx For Less
- Mexx
- Lucky Brand Jeans
- FatFace
- Monet
- Nautica
- Marks & Spencer
- Tape à L'Oeil
- Membur
- R&B
- Bleu Comme Gris, Dubai Mall
- Geox
- Paris 68
- Essential
- Gian Franco Lorenzi
- The Deal, Wanda Mall

Luxury Retail

- See By Chloé
- Zadig & Voltaire
- Tory Burch
- Cole Haan
- Marc by Marc Jacobs
- Guerlain
- Nina Ricci
- Hervé Léger
- Paule Ka
- Dinh Van
- Baccarat
- Boss
- Guerlain

Kiosks

- Nina Ricci, Galleries Lafayette
- Tumi, Galleries Lafayette
- Moallim Jewellery, Galleries Lafayette
- Molton Brown, Tryano, Yas Mall
- L'Occitane, Naeem Mall

Villas & Private Residences

- Villas for H.E. Mr. Rashid Abdullah Al Nuaimi, Abu Dhabi
- Villa for Dr. Azad Moopen, Dubai Hills
- 2 Villas In the Villa Project, Dubailand
- Villa in Al Ghusais
- Villa in Meadows, Dubai

Residences

- Residences in Downtown Dubai
- Residences in Marina
- Residences in Palm Jumeirah
- Residences in Jumeirah Living
- Residences in Al Furjan
- Residences in JLT
- Residences in JBR
- Residence in Green Community
- Residences in Jumeirah Golf Estates
- Residences in The Villa , Dubailand
- Residences in Arabian Ranches

Showrooms & Offices

- KAM Investments office, One Central
- Doors Restaurants LLC Office, Marsa Al Seef
- Sara Showroom, Sheikh Zayed Road
- Avantgarde Office, Dubai Design District
- Sleep Fly Lounge, Hamad International Airport
- Aston Martin Office and Showroom
- Marka PJSC Head Office
- J Equals J, Design District
- Nissan Automobiles Office and Showroom
- AL Hilal Bank
- Abu Dhabi Islamic Bank
- Indigo LLC
- Design Labs Events Corporate Office
- Repton School Auditorium, Dubai
- Techshop Express Office and Workshop
- Thimaar Distribution Centre
- Sportsbrand TV Office and Studio
- Design Labs Interiors Corporate Office
- Bank of China
- LG Service Centre and office
- ECAP Investments, City Walk
- Qube Developmants, City Walk

KSA Project Spotlight

- 1886, Riyadh
- 1886, Jeddah
- Bedashing, Riyadh
- Guerlain, Riyadh
- Tips and Toes, Riyadh
- The White Company
- Abaya Fashions
- Bois & Chiffons
- Flamant
- The Great Kebab Factory
- Camilles Cafe
- Gourmet Burger Kitchen
- Morelli's Icecream
- Yo Sushi
- Liwan Café
- Crepe Café
- See by Chloe
- Marina Home
- Molton Brown

Oman Project Spotlight

- Brands for Less
- Italian Barista
- Guess
- The White Company
- Embress Steak House
- Borders
- Baskin Robbins
- Malabar Gold
- Viva
- L'Occitane
- McDonalds
- Homes R Us
- Mexx
- Abdul Wahab Office
- Baby Shop
- Embress Steak House
- Dunkin Donuts
- Sun N Sand



YOUR CHOSEN CONTRACTOR

www.rkgulf.com

436A, Office Tower,
Al Ghurair Centre, Dubai,
U.A.E. P.O.Box: 12927



+971 52 902 1100



rkgulflc@eim.ae



RK GULF



[@rkgulflc](https://www.instagram.com/rkgulflc)